

# H Series

## Power ROTA-SLIDE® Rotary Switches



### Agency Approvals

Agency	Agency File Number
c <b>UL</b> US	E42363

### Specifications

<b>Contact Rating</b>	12 Amps @ 125 V AC; 6 AMPS @ 250 V AC; 1 AMP @ 125 V DC (UL/CSA)
<b>Electric Life</b>	10,000 make-and-break cycles at full load
<b>Insulation Resistance</b>	10 <sup>9</sup> Ω min.
<b>Dielectric Strength</b>	1,000 Vrms min. @ sea level.
<b>Indexing</b>	45° one contact models, 8 positions max.; two contact models, 4 positions max.
<b>Operating &amp; Storage Temperature</b>	-30°C to 95°C

**Notes:** Any models supplied with Q, B or G contact material are RoHS compliant. Specifications and materials listed above are for switches with standard options. For information on specific and custom switches, consult Customer Service Center.

### Description

Designers of small appliances, industrial equipment and elevators need long-lasting switches that can withstand repeated use. The H series switches are power Rota-Slide® rotary switches that provide power switching up to 12A, provide multi-pole and multi-position options and are positive detent.

### Features & Benefits

- Multi-pole and multi-position
- Positive detent
- Power switching up to 12 AMPS
- Value added capability
- RoHS Compliant

### Applications

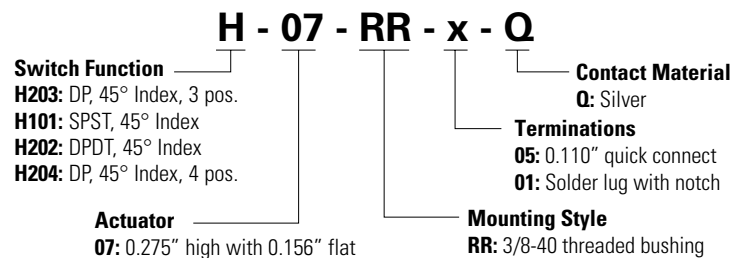
- Small appliances
- Industrial equipment
- Elevators

### Materials

<b>Housing &amp; Bushing</b>	6/6 nylon (UL 94V-2).
<b>Actuator</b>	
<b>Contacts &amp; Terminals</b>	Copper, silver plated.
<b>Contact Spring</b>	Music wire or stainless steel
<b>Mounting Nut</b>	Steel, zinc plated.
<b>Terminal Seal</b>	Epoxy.

### Ordering Number

To order, simply select desired option from each category and place in the appropriate box. For additional options not shown in catalog, consult Customer Service Center.



# H Series

## Power ROTA-SLIDE® Rotary Switches



### Switch Function

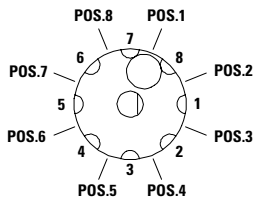
#### SP Models 45° Indexing

No. Poles	Model No.	Switch Function	Terminals
SP	H101	SPST	8-1

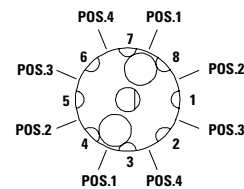
#### DP Models 45° Indexing

No. Poles	Model No.	Switch Function	Terminals
DP	H202	DPDT	7-8-1, 3-4-5
DP	H203	3 Positions	All Terminals
DP	H204	4 Positions	All Terminals

#### SP Models 45° Indexing Schematic

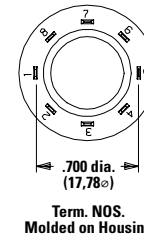
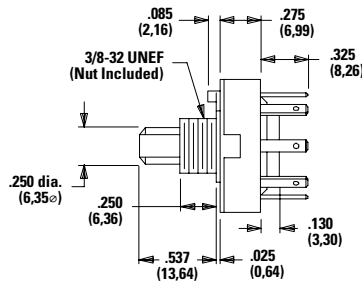
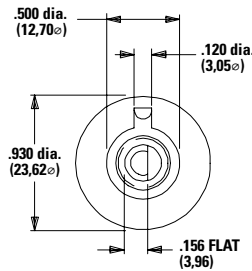


#### DP Models 45° Indexing Schematic



**Notes:** Break-before-make contacts. Terminal numbers are molded on bottom of housing. Actuators and contacts are shown in position 1.  
 No common terminal is present. Switching function is provided by movable contacts shorting adjacent pairs of stationary contacts.  
 All models are available with all options.

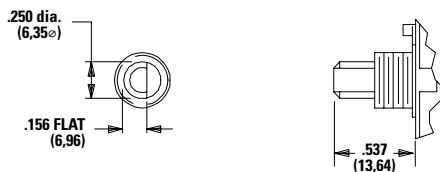
### Dimensions in inch (mm)



Part number shown: H10107RR05Q

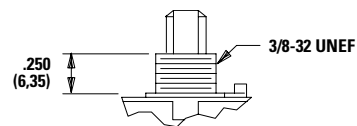
### Actuator

#### 07 0.275" High With 0.156" Flat

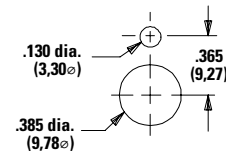


### Mounting Style

#### RR 3/8-32 Threaded Bushing



### Panel Mounting



Mounting nut included (part number 925C00000).

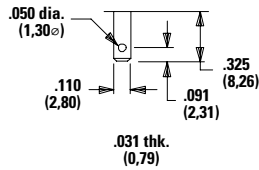
# H Series

## Power ROTA-SLIDE® Rotary Switches

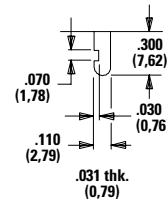


### Terminations

#### 05 Solder Lug With Hole



#### 01 Solder Lug With Notch



Note: Not available on models with 90° indexing.

### Contact Material

Option Code	Contact Material	Rating
Q	Silver <sup>1</sup>	Power 12 amps @ 125 V AC; 6 amps @ 250 V AC; 1 amp @ 125 V DC.

Notes: See Technical Data section of this catalog for RoHS compliant and compatible definition and specifications. Any models supplied with Q contact material are RoHS compliant. All models **C&K** **US** with all options.

1. **Contacts & Terminals:** Copper, silver plated.