

KST Series

Long Travel Tactile Switch for SMT 6.2 x 6.2 mm with 5.0 mm Rubber Actuator



Specifications

Function	Momentary
Contact Arrangement	1 make contact = SPST, N.O.
Terminals	J bend or Gullwing type for SMT
Packaging	Switches are delivered on continuous tape and reels of 1,000 pieces, 330 (12.992) external diameter. Other dimensions according to IEC 60286-3.
Max. Applied Force	4 KG (4078GF) ¹

Note:

1. Valid one time. Maximum allowed travel to avoid overload issues is 1.75mm.

Electrical Characteristics

	Silver	Gold
Max. Switching Power	1.0 VA	0.2 VA
Max. Power		
Min. / Max. Voltage	20 MV - 32 VDC	
Min. / Max. Current	1 MA - 50 MA	1 MA- 10 MA
Dielectric Strength	≥ 250 Vrms	
Contact Resistance	< 100 mΩ	
Insulation Resistance	Initial measurement: ≥ 1GΩ After damp heat: ≥ 10MΩ	
Bounce Time	< 5 ms	

Notes:

Specifications listed above are for switches with standard options. For information on specific and custom switches, consult Customer Service Center. This data sheet does not provide enough information for applications which require a certain level of quality or safety such as automotive, medical systems, safety equipment. Please contact your sales representative to get contractual specification package.

Environmental Characteristics

Operating Temperature	-40°C to 85°C	-40°C to 125°C
Storage Temperature		

Process

Soldering	Lead free reflow soldering process in accordance with IEC 61760-1.
------------------	--

Description

The KST series is an IP40 rated seal switch, and is ideal for car dashboards and front panel applications. KST also has a contact rating of 10mA (gold) and 50mA (silver), features a rubber actuator and is compatible with pick and place machines.

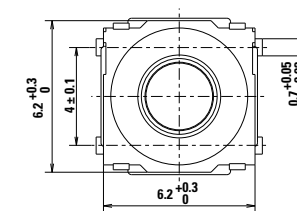
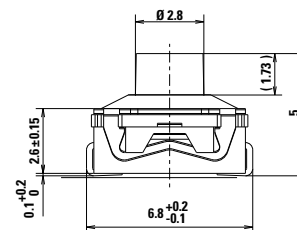
Features & Benefits

- Rubber actuator
- Silver contact material
- J or G terminals
- Compatible with pick and place machines
- IP40 sealed
- RoHS compliant and compatible

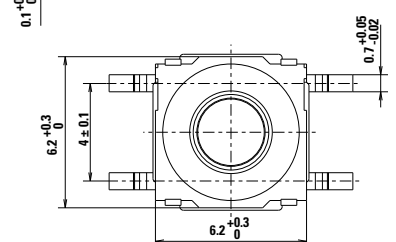
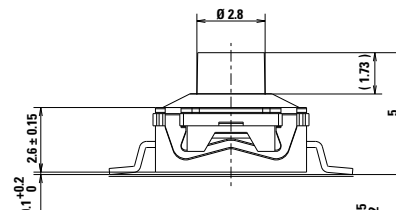
Applications

- Front panel
- Car dashboards
- Telephone set
- Instrumentation

J J Bend



G Gullwing



KST Series

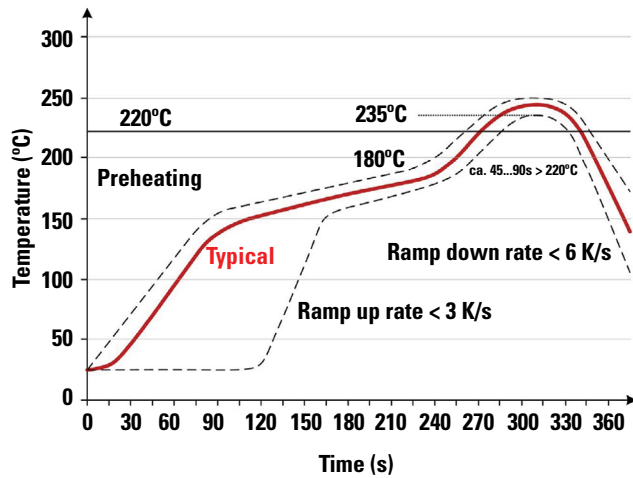
Long Travel Tactile Switch for SMT 6.2 x 6.2 mm with 5.0 mm Rubber Actuator



Mechanical Characteristics

Part #	Operating force Fa N (grams)±30%	Operating Life (operations)	Travel to make
KST221G / J	1.6-3.2	100,000	1.3+0.3/-0.2
KST241G / J	2.45-4.55	100,000	

Soldering Profile

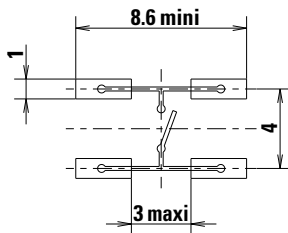


Note: Up to 2 reflow cycles in accordance with the above temperature profile

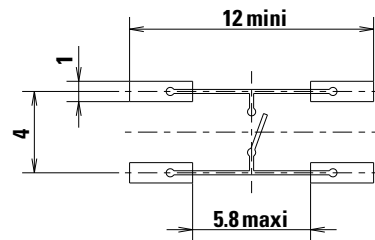
Soldering process: Depending on the application, this component is suited to the following methods:

- Terminals being silver or gold plated over a nickel barrier, the use of slightly activated flux is suitable.
- Lead free soldering process in accordance with the definition on the left.

J Terminations (mm)

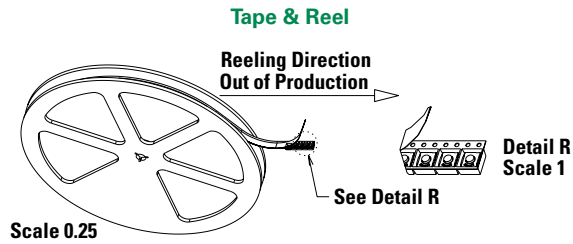


G Terminations (mm)



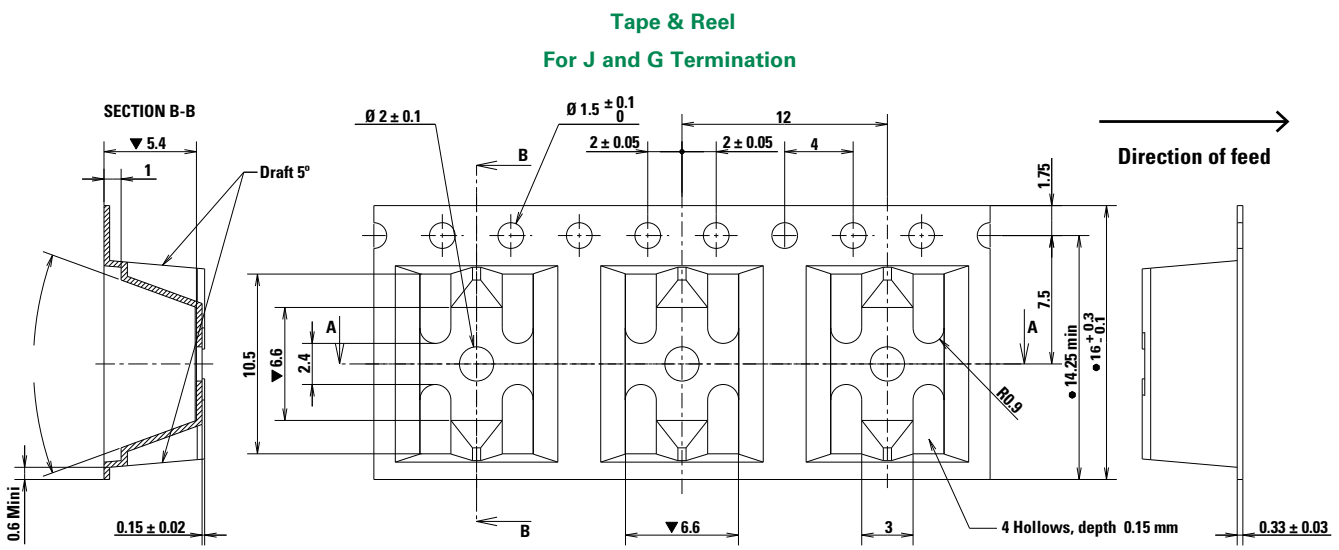
KST Series

Long Travel Tactile Switch for SMT 6.2 x 6.2 mm with 5.0 mm Rubber Actuator



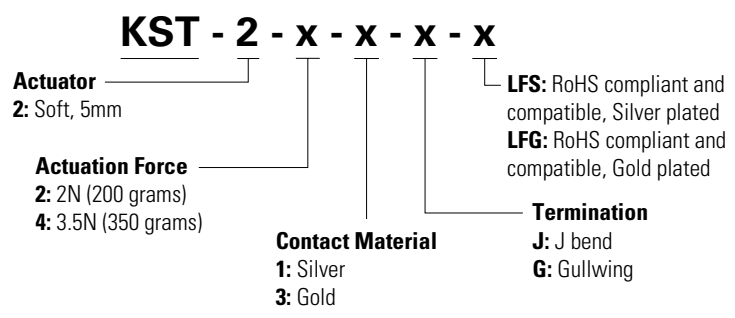
Packaging Details

Type	Tape & reel
Number of Parts in Packaging	1,000
Other Information	Tape and reel per EIA 481
Transport Conditions	According to specification NF H00-060



Ordering Number

Our easy build-a-switch concept allows you to mix and match options to create the switch you need. To order, select desired option from each category and place it in the appropriate box. For any part number different from those listed above, please consult your local representative.



Liability Limitation

This datasheet does not provide enough information for applications that require a certain level of quality or safety such as automotive, medical systems, or safety equipment. Please contact customer service for the contractual specification package.

Disclaimer Notice - Information furnished is believed to be accurate and reliable. However, users should independently evaluate the suitability of and test each product selected for their own applications. Littelfuse products are not designed for, and may not be used in, all applications. Read complete Disclaimer Notice at <http://www.littelfuse.com/disclaimer-electronics>.

