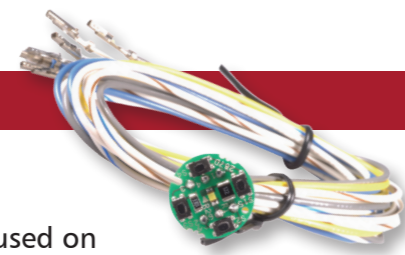


## DESIGNING TECHNOLOGY INTO SOLUTIONS



C&K has been providing innovative customer solutions for over 50 years. With its worldwide manufacturing, engineering and sales support, C&K is focused on delivering customer satisfaction with superior products, processes and services.

Through close partnerships with our customers, C&K continues to expand its offering to fully integrate our core switch products into customer specific interface solutions.

C&K products for Avionics end applications include:

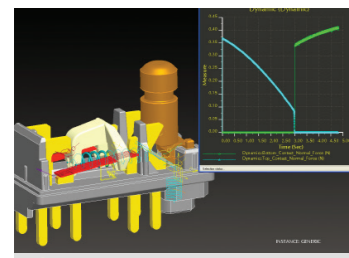
- Key and tactile switches for cockpit panel dashboard, printers, interior lighting and security systems
- DIP, key switches and toggles for general electronic equipment
- Illuminated tactile push buttons for dashboard control units
- Key switches for piloting joysticks and passenger server unit applications
- SIM card reader for entertainment communication systems

C&K's extensive offering also includes navigation, detect, rocker and slide components as well as snap acting, rotary, switchlock and thumbwheel.

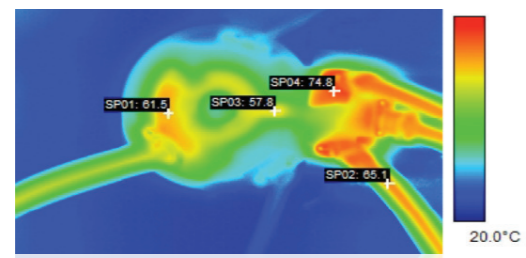
## ENGINEERING CAPABILITIES — EN 9100 MANUFACTURING PLANT

Our process starts by listening to our customers and the challenges they face integrating C&K switch products into their end products. Our trained sales and engineering teams work closely with our customer's product design teams to integrate our switch knowledge into cost effective model and assembly solutions.

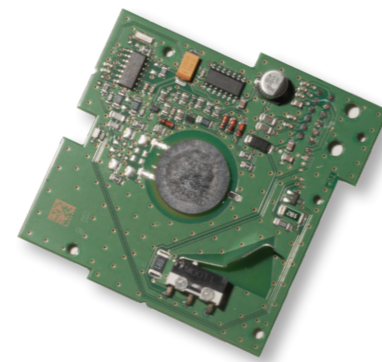
- C&K maintains regional design centers in Newton MA USA, Dole France, and Huizhou China to service your needs. C&K offers extensive and quick turn prototype services.
- Our analytical tools include: 3-D CAD modeling, mold flow analysis, FEA, dynamic motion analysis, high speed photography, fixed and dynamic X-ray, thermal imaging, SEM / FTIR, light propagation analysis, sound chamber and force / displacement tester.



3D CAD Modeling



Molding rheology simulation



## C&K SALES SUPPORT



Please visit [www.ckswitches.com](http://www.ckswitches.com) to view C&K's full product offering and list of partners and distributors. If you need any additional information or have any question, please contact your local customer representative.

### AMERICAS

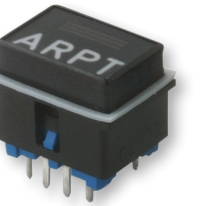
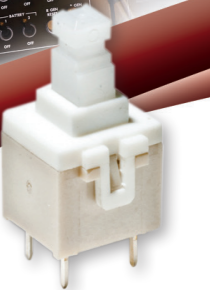
Tel: +1.617.969.3700

### ASIA

Tel: +852.3713.5288

### EUROPE

Tel: +33.1.60.24.51.51



## SWITCH AND INTERCONNECT SOLUTIONS FOR AVIONICS APPLICATIONS



### GENERAL ELECTRONICS

**C&K products:**  
All DIPs, MIL Toggles, AP / NP

- Main specifications:**  
**DIP Series:**
- Low profile
  - Multiple types available
  - Multiple position configurations
  - Washable
  - THT and SMT versions available



- MIL Toggles Series**
- Qualified to MIL-S-83731
  - 50µ inch selective gold contact plating
  - Epoxy sealed terminals for process compatibility
  - Rated for logic level to 5A resistive loads and 2A inductive loads
  - Flame retardant housing material



- AP / NP Series**
- IP68
  - Operating temperature: -55°C to 105°C
  - Multiple housing styles
  - Up to 5A resistive load
  - Operating life: 1000K life cycles



### PANEL / PRINTER

**C&K products:** EDM, KSC, KSR

- Main specifications:**  
**EDM Series**
- Positive tactile feeling
  - Operating temperature: -55°C to 85°C
  - Short travel
  - Self cleaning
  - Operating life: 1000K life cycles



- KSC Series**
- Positive tactile feeling
  - Operating temperature: -55°C to 125°C
  - Range of 6 actuation forces
  - IP67
  - Operating life: 100K to 1000K life cycles



- KSR Series**
- Saved PCB space
  - Operating temperature: -55°C to 125°C
  - Detect type available
  - Rubber actuator
  - Operating life: 30K to 200K life cycles



### FLIGHT CONTROL UNIT

**C&K products:**  
PBA, EDM

- Main specifications:**  
**PBA Series**
- Positive tactile feeling
  - Operating temperature: -30°C to 85°C
  - Illuminated display
  - Small size
  - Cold lighting
  - Operating life: 1000K life cycles



### PASSENGER SERVER UNIT

**C&K products:** KSJ, KSC

- Main specifications:**  
**KSJ, KSC Series**
- Sealed against flux for KSJ / IP67 for KSC
  - Operating temperature: -40°C to 125°C
  - Spherical actuator allows actuation force off center +/- 30° with regard to travel for KSJ
  - Different range of actuation forces
  - Operating life:
    - 30K (radial) / 100K (axial) life cycles for KSJ
    - 100K to 1000K life cycles for KSC



### ENTERTAINMENT COMMUNICATION SYSTEM

**C&K products:** CCM03

- Main specifications:**  
**CCM03 Series**
- SIM/SAM card acceptance
  - Operating temperature: -40°C to 85°C
  - Hinged and fixed covers
  - Compatible with pick and place and lead free soldering
  - Operating life: 10K to 50K life cycles



### JOYSTICK APPLICATION IN THE COCKPIT

**C&K products:**  
K12S

- Main specifications:**  
**K12S Series**
- Positive tactile feeling
  - Operating temperature: -40°C to 85°C
  - Perfect for harsh environment application
  - IP67
  - Illuminated version available
  - DPST and detect version available
  - Operating life: more than 1000K life cycles



### INTERIOR LIGHTING AND SECURITY SYSTEM

**C&K products:**  
PVA, EDM, KSJ

- Main specifications:**  
**PVA Series**
- Compact design
  - Operating temperature: -40°C to 85°C
  - Short stroke to latch
  - Wide variety of actuator heights, forces and styles for PVA
  - Adapted for medium power applications
  - Operating life: 100K life cycles

