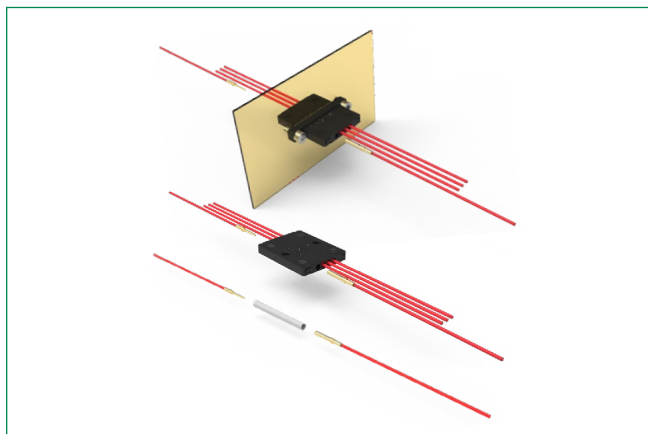


# SpaceSplice™ Series

Wire Connecting Solution ESCC 3401/097

With removable D\*MA crimp contacts ESCC 3401/005



## Specifications

<b>Quality Level</b>	ESA / ESCC: code 3401 (Flying model) Qualification reviewed every 2 years
<b>Process Contact/ Cable Insertion</b>	Cables crimping onto contacts with standard D*MA Crimping tool M22520/2-01 and locator M22520/2-08 (to be ordered separately). Wires cable installed by the end user.
<b>Test Retention</b>	A dedicated tool is available to make the retention test of each contacts in the connectors.
<b>Process Contact/ Cable Extract</b>	A dedicated tool M81969/39-01 is available to remove the contacts from the connectors (1 extract tool delivered per bag).
<b>Packaging</b>	Space Splice 1 way: 50 pcs per bag. One extract tool M81969/39-01 delivered per bag. Space Splice 4 ways: Individual packaging. One extract tool M81969/39-01 delivered par bag. Traceability associated as per ESA/ESCC specifications

## Electrical & Mechanical Characteristics

Characteristic	Specification
<b>Working Voltage - 1 way (sea level)</b>	300 Vrms
<b>Working Voltage - 4 ways (sea level)</b>	250 Vrms
<b>Rated Current</b>	7.5 A
<b>Contact Resistance</b>	5 mΩ (rated current)
<b>Insulation Resistance at 500 V DC</b>	5000 MΩ min
<b>Voltage Proof - 1 way</b>	1250 Vrms / 2.0mA
<b>Voltage Proof - 4 ways</b>	1000 Vrms / 2.0mA
<b>Residual Magnetism Level (NMB)</b>	<200 Gamma
<b>Temperature Range</b>	-55/+125 °C
<b>Radiation Resistance</b>	>1x10 <sup>6</sup> Rads
<b>Contact Retention Force</b>	40 N max

## Description

Standard wires to wires connecting solution to replace hand splice process. It allow you to connect 2 wires using D\*MA crimpable and removable contact technology and designed to accept the most relevant gauges. This series is useful to connect electrical components with limited number of wires (thermistors, heaters...). You can create your own connector where the space is limited. Or I allow you to repair harnesses at a lower cost, because ther is no longer any need to redo complete wiring.

## Features & Benefits

- Replacement of manual splices by standard solution
- Compliant with ESA/ESCC specifications
- Easy to use
- Removable D\*MA crimp type contacts standard
- Compact format and designed to accept the most popular cable gauges
- Non-Outgassing
- Low residual magnetism
- High radiation and temperature resisntace (PEEK material)

## Applications

- Space equipment
- Satellites harnesses and payloads
- Avionics/ Military

## Specifications

- High performance wires to wires connectors ESA qualified, for space applications.
- Compliant to ESCC specifications 3401/097 Connectors and 3401/005 Removable Crimp Contacts.
- Suitable for use in Space, and high performance military/ aerospace applications: Board to Board, Board to Cable or Cable to Cable applications.
- Removable contacts (D\*MA technology).
- Cable sizes: AWG20, AWG22, AWG24, AWG26 and AWG28.
- 1 way and 4 ways connections available.
- 4 ways variants:
  - Radial fixing mount (Stackable)
  - Axial fixing for panel mount

## Materials & Finishes

Component	Material	Finish
Insulator	PEEK	UL-94-V0, 1 way - natural color 4 ways - black color
Retention Clip	Berylium Copper Alloy	Raw material
Socket Contacts	Copper Alloy	1.27 μm Gold over Copper underlay
Pin Contacts	Copper Alloy	1.27 μm Gold over Copper underlay

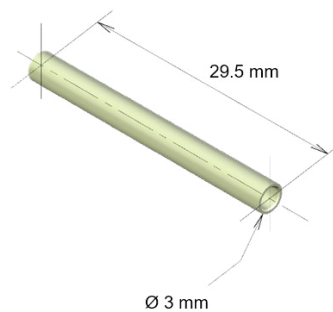
**SpaceSplice™ Series**

Wire Connecting Solution ESCC 3401/097

With removable D\*MA crimp contacts ESCC 3401/005

**Space Splice 1 Way, Wire To Wire Connection****Description**

Part #	ESA Description
C115366-2776C	340109701B

**Dimensions and Mass**

Mass = 0.2 grams

**Wires to wires connecting solution**

- To crimp pin and Socket D\*MA contacts with wires (such as D\*MA connectors)
- Insert the contacts into Space Splice (manually or using D\*MA insertion tool)
- For insertion of contacts wired with AWG26/28 (without shrinkable tube), the use of insertion tool is mandatory
- If different wire sizes are used on each contact side, insert contact with smallest wire size first to perform retention test by pushing

**Use Explanation**

# SpaceSplice™ Series

Wire Connecting Solution ESCC 3401/097  
With removable D\*MA crimp contacts ESCC 3401/005



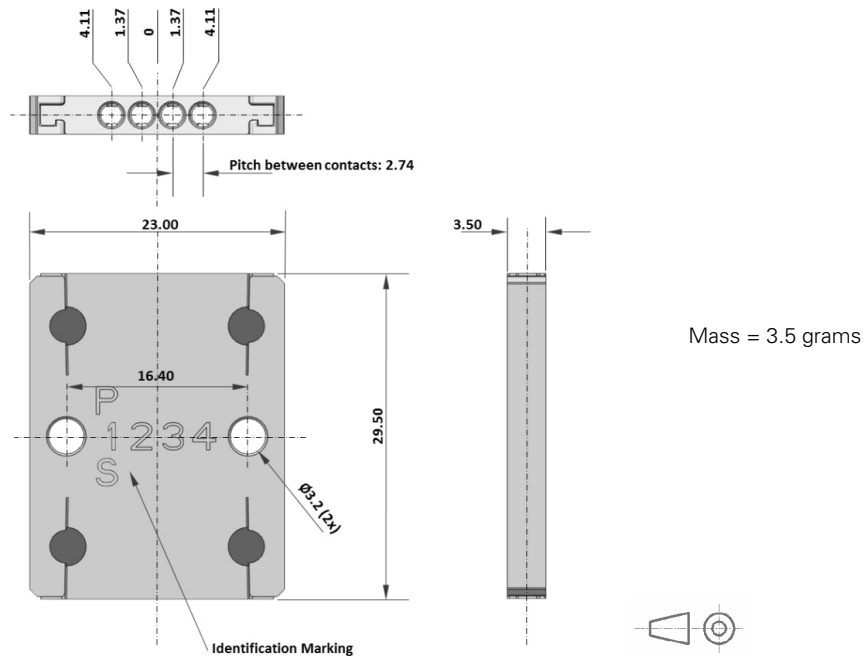
## Space Splice 4 Way, Radial Fixing Variant, Stackable



### Description

Part #	ESA Description
C115366-3014C	340109702B 04RA3014

### Dimensions and Mass (mm)

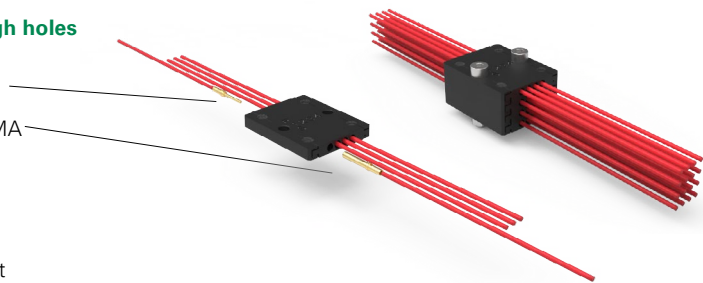


### Use Explanation

#### Wires to wires connecting solution

#### Floating or possibility of fixing the insulator using 2 through holes

- To crimp pin and Socket D\*MA contacts with wires (such as D\*MA connectors)
- Insert the contacts into Space Splice (manually or using D\*MA insertion tool).
- For insertion of contacts wired with AWG26/28 (without shrinkable tube), the use of insertion tool is mandatory.
- If different wire sizes are used on each contact side, insert contact with smallest wire size first to perform retention test by pushing.



**Note:** Stacking configuration: 16 conductors

# SpaceSplice™ Series

Wire Connecting Solution ESCC 3401/097

With removable D\*MA crimp contacts ESCC 3401/005



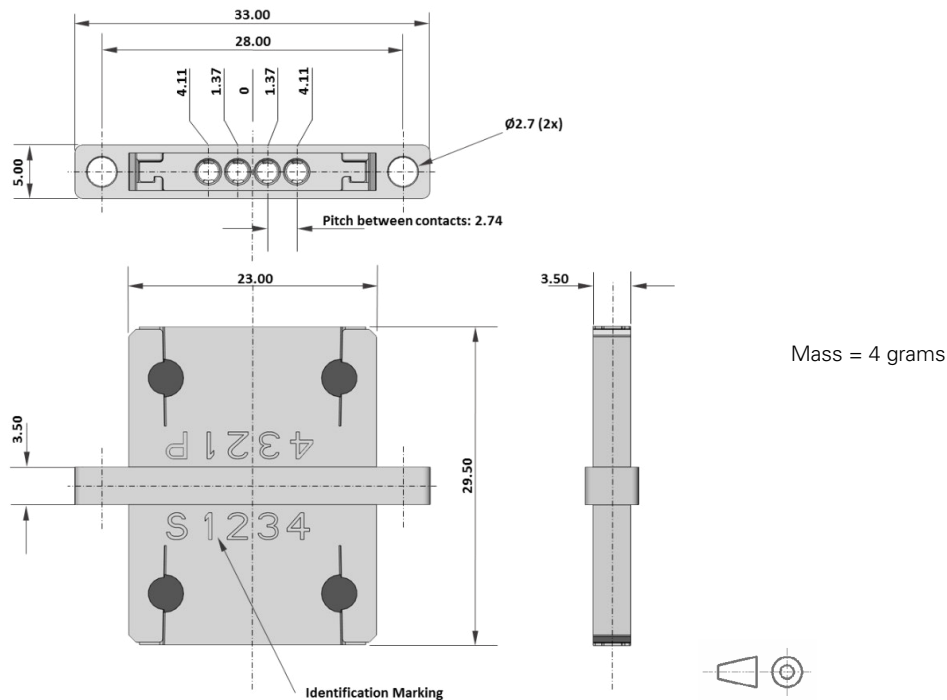
## Space Splice 4 Way, Axial Fixing Variant, Panel Mount



### Description

Part #	ESA Description
C115366-3015C	340109702B 04AA3015

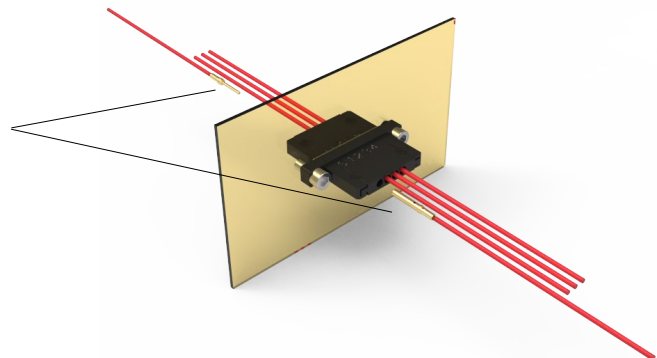
### Dimensions and Mass (mm)



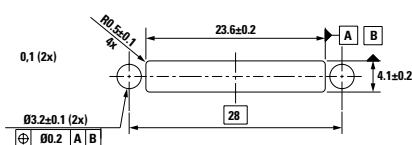
### Use Explanation

#### Wires to wires connecting solution use to pass through panels

- To crimp pin and Socket D\*MA contacts with wires (such as D\*MA connectors)
- Insert the contacts into Space Splice (manually or using D\*MA insertion tool)
- For insertion of contacts wired with AWG26/28 (without shrinkable tube), the use of insertion tool is mandatory
- If different wire sizes are used on each contact side, insert contact with smallest wire size first to perform retention test by pushing



#### Panel Cut-Out Profile



# SpaceSplice™ Series

Wire Connecting Solution ESCC 3401/097

With removable D\*MA crimp contacts ESCC 3401/005

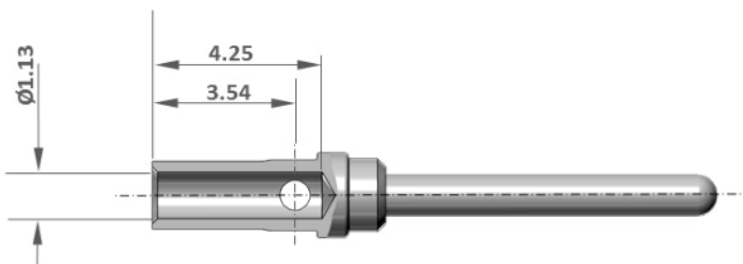
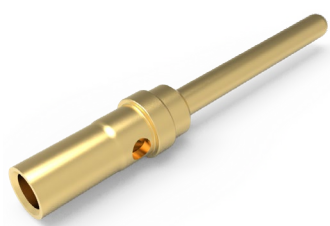


## Sizes & Part Numbers

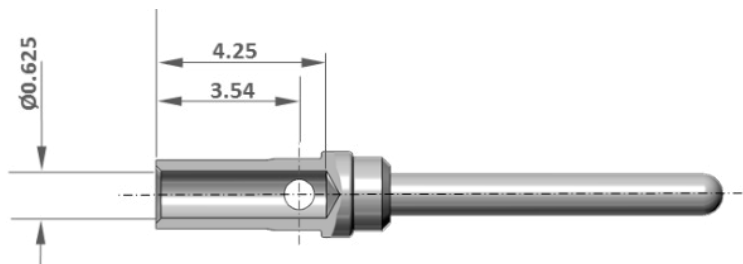
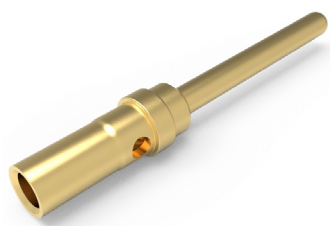
Part Number	Part	Size	Wire Size	ESA Description
C330-8996-101H	D*MA Contact Pin	20/20	AWG20, AWG22, AWG24	340100501B
C330-8997-101H	D*MA Contact Pin	20/26	AWG26, AWG28	340100503B
C031-8996-101H	D*MA Contact Socket	20/20	AWG20, AWG22, AWG24	340100502B
C031-8997-101H	D*MA Contact Socket	20/26	AWG26, AWG28	340100504B

**Note:** Measurements in Millimeters

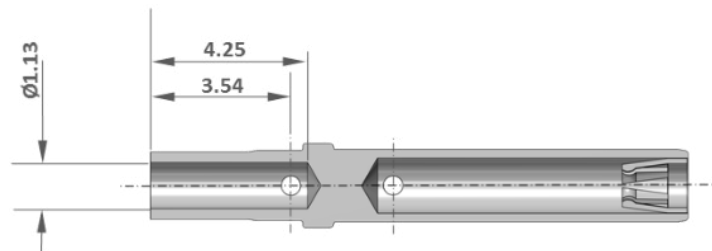
### C330-8996-101H Dimensions



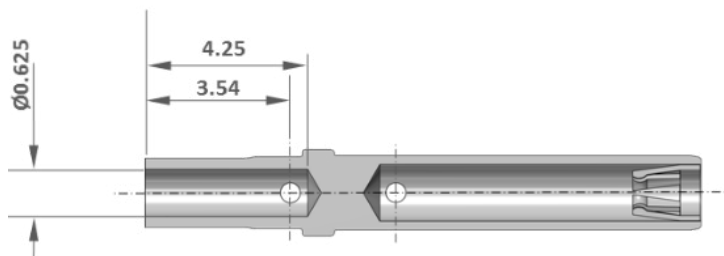
### C330-8997-101H Dimensions



### C031-8996-101H Dimensions



### C031-8997-101H Dimensions



**Note:** Measurements in Millimeters





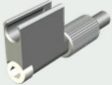
# SpaceSplice™ Series

Wire Connecting Solution ESCC 3401/097

With removable D\*MA crimp contacts ESCC 3401/005



## Accessories

Accessory Image	Accessory Name	Description	Part #
	Crimping Tool	M22520/2-01	C995-0001-584
	Locator	M22520/2-01	C995-0001-604
	Insertion / Extraction Tool	M81969/39-01	C980-2000-426
 6-32 UNC-2A Compatible with OCETA OCE8	Contact Probe for Retention Tool Push Test <sup>1</sup>	SPLICE-TOOL-RETENTION-01	C115366-2852
 6-32 UNC-2A Compatible with OCETA OCE8	Contact Probe for Retention Tool Pull Test <sup>2</sup>	SPLICE-TOOL-RETENTION-02	C115366-2853

**Note:**

1. Push test recommended value: All wire size: 20N max

2. Pull test recommended value: AWG20, 22, 24, 26: 20N max AWG28: 10N max