

RKX SERIES

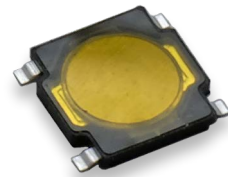
The Perfect Series for Keyfobs

RKA2, RKB2 and RKC2 are the 3 series available for multiple design options in the keyless entry system business. They have the perfect form factor and actuation force range adapted to this segment.



RKA2

Low profile 0.55mm above PCB with product size 4.5 x 4.5 mm five actuation forces with up to 540gf with 150k life and 100gf, 160gf with 1000k life.



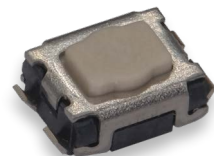
RKB2

2.5 mm height with size at 4.2 x 3.2 mm, three actuation forces up to 4N with 100k life.



RKC2

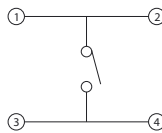
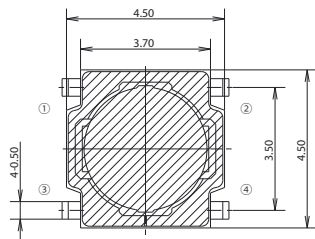
1.7 mm height with size at 3.5 x 2.7 mm, four actuation forces up to 200k life.



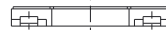
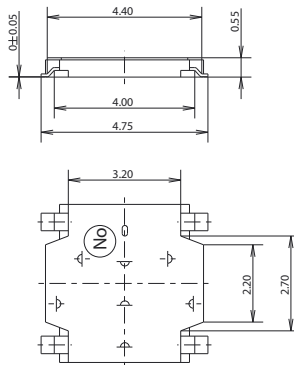
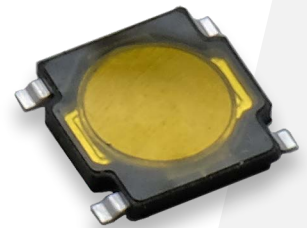
RKA2

0.55 mm height low profile switch

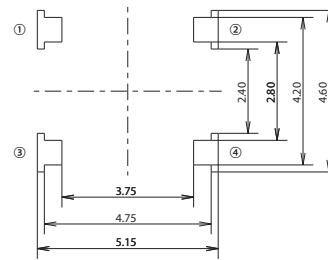
Description	Force	Life Cycles	Product Size	Height	Travel	Operating Temperature	Rating
RKA2SGN055SMTR LFS	100gf	1000k	4.5 x 4.5 mm	0.5 mm	0.2+/-0.1 mm	-40°C/+85°C	15VDC-20mA
RKA2SGM055SMTR LFS	160gf	1000k					
RKA2SGK055SMTR LFS	250gf	200k					
RKA2SGG055SMTR LFS	400gf	200k					
RKA2SGS055SMTR LFS	540gf	150k					



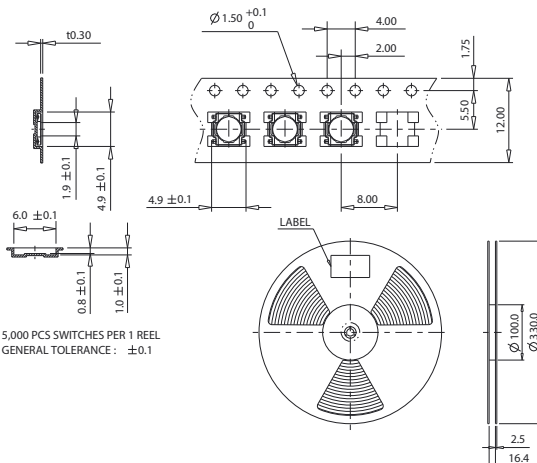
CIRCUIT DIAGRAM



SET MAKER KNOB SIZE



P.C.B MOUNTING SOLDER LAND DIMENSION

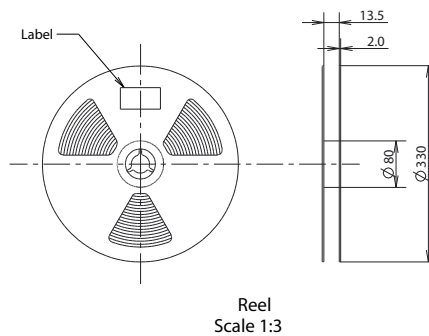
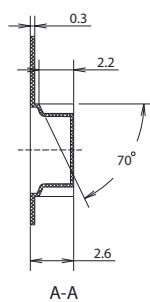
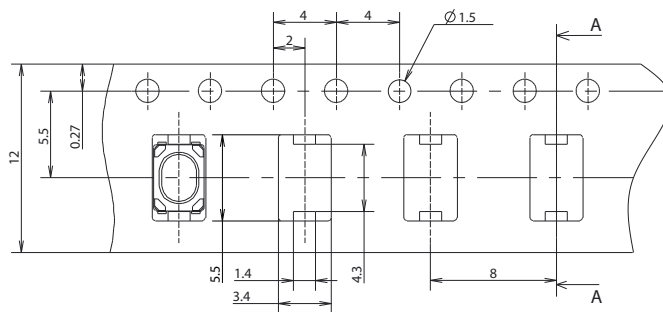
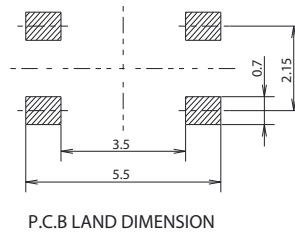
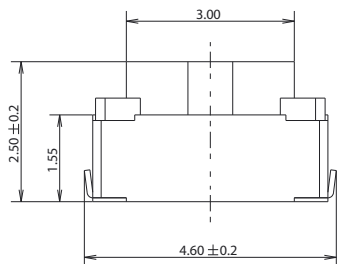
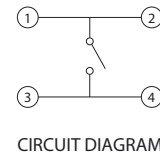
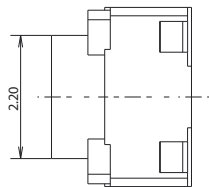
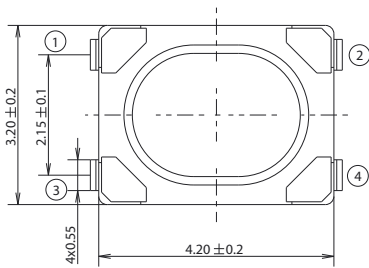


1. 5,000 PCS SWITCHES PER 1 REEL
 2. GENERAL TOLERANCE: ±0.1

RKB2

2.5 mm height with compact PCB layout

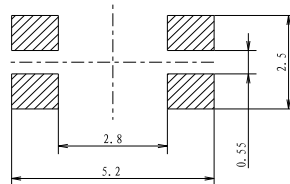
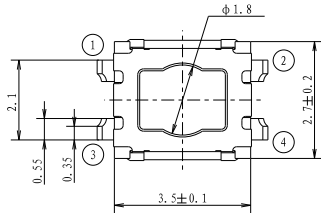
Description	Force	Life Cycles	Product Size	Height	Travel	Operating Temperature	Rating
RKB2SJM250SMTR LFS	180gf	100k	4.2 x 3.2 mm	2.5 mm	0.2+/-0.1 mm	-40°C/+85°C	12VDC-50mA
RKB2SJK250SMTR LFS	250gf	100k					
RKB2SJG250SMTR LFS	400gf	100k					



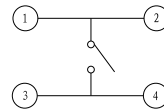
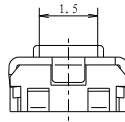
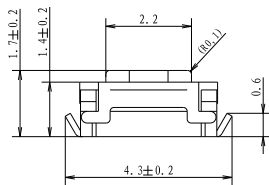
RKC2

1.7 mm height, high actuation force

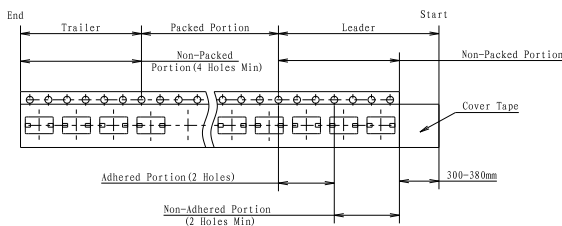
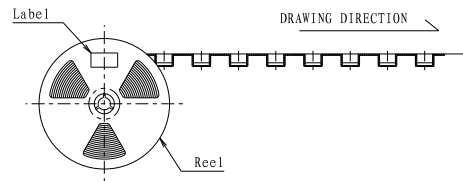
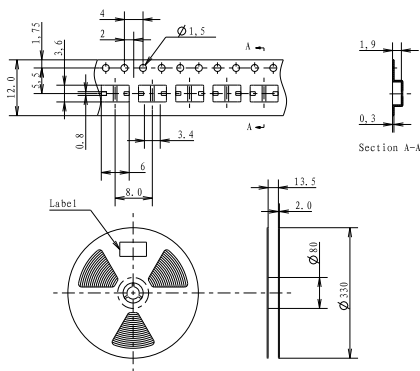
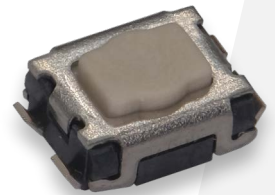
Description	Force	Life Cycles	Product Size	Height	Travel	Operating Temperature	Rating
RKC2SJM170SMTR LFS	180gf	200k	3.5 x 2.7 mm	1.7 mm	0.15+/-0.1 mm	-40°C/+85°C	12VDC-50mA
RKC2SJK170SMTR LFS	250gf	200k					
RKC2SJR170SMTR LFS	350gf	200k					
RKC2SJF170SMTR LFS	500gf	100k					



P. C. B LAND DIMENSION



CIRCUIT DIAGRAM



NOTE
 1. 4K pcs SWITCHES PER 1 REEL
 2. GENERAL TOLERANCE : 0.3mm